



and

CDN. Club Deportivo Navarra. Sección de Orientación

GOT. Gipuzkoako Orientazio Taldea

Proposal to host

13th European Rogaining Championship in 2016

August 27-28, 2016

Aralar, Spain





INDEX	Page
1. Organizers -----	3
2. Proposed date of the event -----	3
3. Planned Location -----	3
4. Organizers' experience in participation and organizing rogaines -----	6
5. Terrain -----	9
6. Map -----	11
7. Description of Punching system and Result computing Software -----	12
8. Logistics -----	12
9. Weather and climate conditions -----	13
10. Lighting -----	14
11. Transport and Accommodation info -----	14
12. Communication strategies -----	15
13. Names of the key organizers -----	16
14. Compliance with general conditions -----	16
15. Additional details -----	17



1. Organizers

Iberogaine (Ibe), Spanish Rogaining Association: <http://iberogaine.weebly.com/>
(soon in www.iberogaine.org)

Gipuzkoako Orientazio Taldea (GOT): <http://GOTorientazioa.org>

Club Deportivo Navarra (CDN): <http://odeportivonavarramaraton.blogspot.com.es/>

2. Proposed date of the event

Saturday, August 27- Sunday August 28, 2016

Proposed dates were selected as the best ones to hold the event by accurate evaluation of the climate and weather conditions, daylight/nighttime duration ratio, local nature protection and environmental limitations, organizers availability and requirements.

3. Planned Location

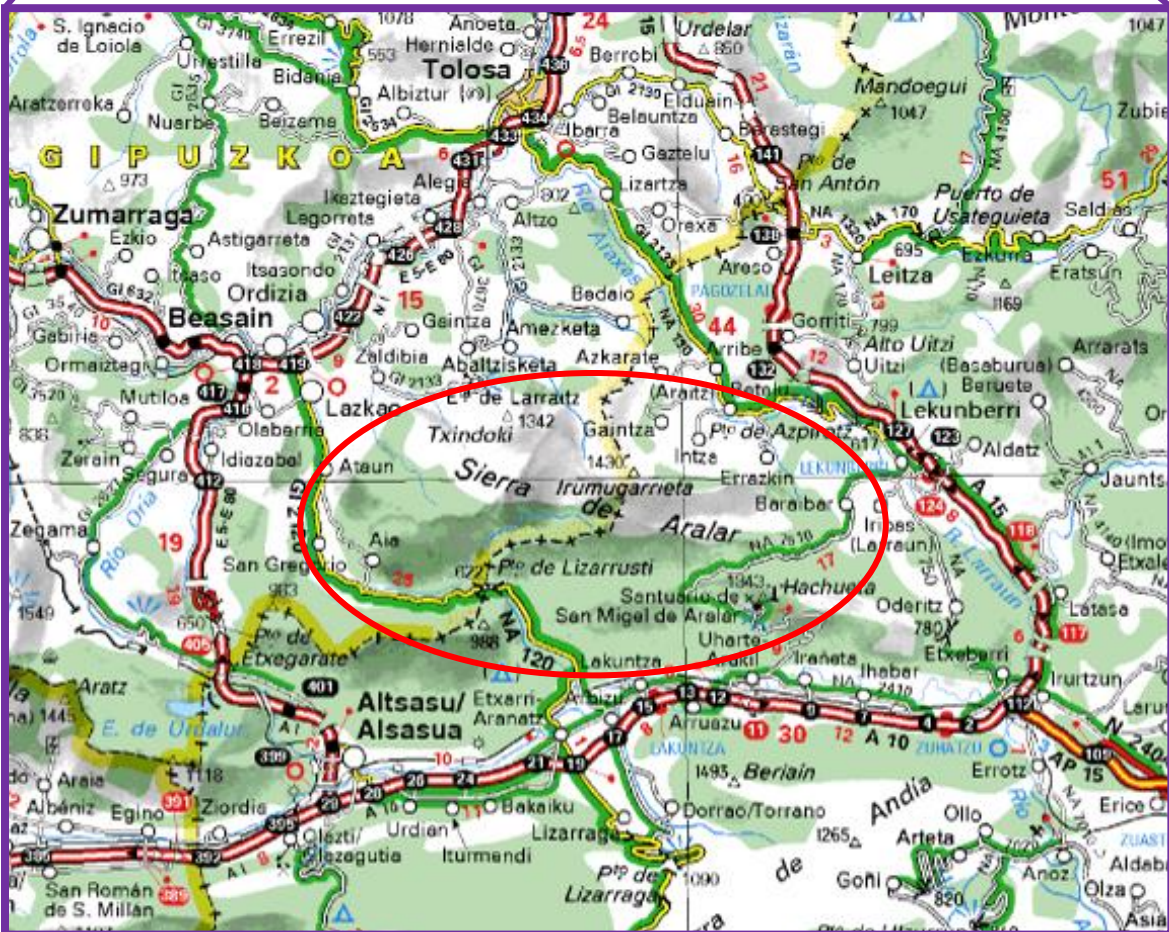
Aralar range is located in the southeast of the province of Gipuzkoa - Basque Country - and in the north west of Navarre. The event location, **Lekunberri**, is located 35 Km north of Pamplona, 47 Km to San Sebastian, 136 Km to Bilbao, 92 Km to Biarritz – France.

Go to Google Maps: <https://goo.gl/maps/IGIUp>

Aralar is included in EUwide network of nature protection areas, Nature 2000, and is considered a Special Conservation Area in Navarre and as a Natural Park in Gipuzkoa also.

<http://tourism.euskadi.net/en/natural-areas/aralar-natural-park/x65-12375/en/>

<http://www.biodiversidad.navarra.es/Lugar.aspx?id=23>



As you can see the event place is in the core of a touristic region. Basque country and Navarre have common points of interest: excellent wines and gastronomy, monumental cities, Guggenheim, Kursaal, natural areas from alpine mountains to singular beaches, and from green forests to vineyards and semi deserts, touristic routes, art and culture, “fiestas” like running on the bulls, and finally, this specific year 2016 Donostia/San Sebastian has been chosen as European cultural capital.

Tourism in Basque country: <http://tourism.euskadi.net/en/>

Tourism in Navarre: <http://www.turismo.navarra.es/eng/home/>



4. Organizers' experience in participation and organizing rogaines.

Iberogaine Committee and CDN/GOT orienteering clubs provide an experienced and well balanced rogainer organizers team for hosting the 13th ERC2016 event. Organizational team assembled for preparing, promoting, managing and hosting of the 13th ERC2016 consists of experienced and skilled rogainers who have solid, proven background in some top-level international rogaines as well as a hands-on experience in organizing a number of regional rogainer and orienteering events. Both clubs have been organizing every year a major orienteering and rogainer competition. The largest participation in a rogainer was 200 participants and in an orienteering event 800. Core members of organizational team have actively supported the significant expansion of rogainer culture in the region.



Jorge Urquizu Barasoain. Event director.

Selected for his management skills as the Event Director of the 13th ERC2016, has participated as a rogainer in 2 ERCs and 3 World Rogaining Championships, and more than 20 nationwide and regional rogaines. It is worth to mention the top podium achievements throughout his sports career: 3rd MO ERC 2013 and 1st MV WRC 2014.

Currently, he develops his professional career as a Manager of a Service Company focused on Physical activities. Due to his job, he has a lot of contacts in different companies that they will be future sponsors of the competition.



Roberto Pascual Orcajo. Course setter & mapper.

He has participated in 3 WRC and 2 ERC and more than 20 nationwide and regional rogaines, and achieved the following top positions: 3rd MO ERC 2013 and 1st MV WRC 2014.

He is the President of Iberogaine and one of the most influential rogainers in Spain behind this sport. With an undeniable experience on participation and organization of this kind of events, he is a very good and experienced rogaining and orienteering mapper. In his professional career he is a Geomatics Engineer of Navarre government.

Orienteering map sample:

<https://drive.google.com/file/d/0BzRfltaOalBEYzBUbWFYbmFzMkE/view?usp=sharing&pli=1>

Rogaining map sample:

<https://docs.google.com/file/d/0BzRfltaOalBETnZ4TkU4YkxwVVk/edit?usp=sharing&pli=1>



Eric Colon. Timing & results services team leader.

He has participated in 2 WRC and 1 ERC and more than 20 nationwide and regional rogaines. He gets the 3rd MO ERC 2013. He is one of the SportIdent experts of the club with 8 years of experience in Orienteering and Rogaine organization with this system of times results.

In his professional career he is a Process Improvement Manager in a private company. Due his job, he has a lot of contacts in different companies that they will be future sponsors of the competition.



Ibon Goikoetxea Retegi. Event co-director

He has participated in several rogainers as well as organized some local and regional rogaines. (Worth to mention the 2 rogaines organized in the Aralar mountain range). He has led organizational teams, provided support in mapping works and has developed management and communication functions.

His professional career is based on his expertise as an environmental technical engineer for the council of Usurbil (Gipuzkoa) as well as a GIS mapper.

5. Terrain.

Competition area (~125 km²) is located within the Aralar Mountain Range (or Sierra de Aralar/Aralarko Mendilerroa), approximately divided per equal into two regions, Basque Country and Navarre. Terrain is from moderate hilly to mountainous. The highest peak is Irumugarrieta 1430 m and the lowest area is around 550m, varying differences in steep slopes values from 100 to 600 m. This mountainous environment provides a physically challenging terrain where minimized climbs and drops will be an important factor.

The territory's topography is formed by a large limestone massif alternating limestone with clay and sandstone soils. It provides a karstic appearance with sinkholes mixed with re-entrant and gully areas. Due the karstic character water is not present. Only few streams are present in clay areas that eventually disappear when reaching to limestone areas. These limestone areas could be difficult or very difficult to traverse due the irregular soil, sinkholes and cliffs. It should be noticed that this last feature would be the one that gives the terrain a particular technical challenge. Therefore, navigational capabilities and route planning skills acquire a vital importance and have been proven as an essential factor for the successful rogainer.



The forest covers up to 60% of the event area. It comprises areas of beech predominance, mainly in high areas and north slopes, with minor oak sectors in low and south slopes, and experimental reforestation areas with coniferous. Runability is mainly very good. The other 40% of the event area is based on open areas, mostly of very closely trimmed grass on relatively even and smooth ground, together with some rugged land areas.

There is a minimal network of forest roads and paths. The human influence is present by grazing and small shepherds' cottages, as well as some timber harvesting activities. Significant megalithic monuments indicate prehistoric habitation of the range. Human presence has been constant since Neolithic Age. It is believed that the Basque word, 'Aralar' may stem from the words 'aran', meaning 'valley' and 'larre', meaning 'graze-land'.



We think it is an excellent occasion to enjoy a type of terrain never used in a major rogaining competition. Summarizing: high physical and technical challenges of a mountainous and karst environment added to a wonder places will make an unforgettable experience like no others.

http://en.wikipedia.org/wiki/Aralar_Range

6. Map

The scale selected is 1:25 000 with contour interval 10 meters. The sources to create the map are annual orthophoto and LiDAR available in this region. This information allows obtaining a very detailed cartography. In the same way field work is necessary to add details and evaluate forest runnability.

Map design will be based on orienteering software, as OCAD or OOMapper. The map provides a significant difference with usual rogaining maps: forest and open areas are printed in colors depending of their runnability as done in orienteering maps; white, light green and deep green colours will be used for this purpose

Organizer's Clubs will base the final map on previous maps provided by each one of the Clubs. These maps were used in 6h local rogaines, scale 1:20000, and cover around 50km². The above mentioned maps will be adapted to 1:25000 scale and new areas will be added until completion of the new competition map.

You can see one of these maps in:

<https://docs.google.com/file/d/0B5ikkYVAoO00TVJ3Ynd6VkVzT2c/edit?pli=1>

Previous maps will be published at ERC website in order to grant fair play.

Field work and map design of new map will be made by Organizing Clubs members led by Roberto Pascual.



7. Description of Punching system and Result computing Software

The SPORTIdent (SI) electronic punching system will be available. Each team member shall wear one SI card (version 6 or higher), which will be attached to the competitor with a non-removable wristband. SI-cards (version 8, 9 or 10) will be available for rent and provided by the organizers.

SPORTIdent tools will be used for timing and result computing. Software has been successfully used for participant and result computing in a number of adventure sports and rogaining competitions organized by CDN and GOT since 2008.

8. Logistics

The both clubs have own material to organize rogain competition at national level and actually, they dispose of various collaboration to provide big tents for competition center, and tents for hash house, cooking materials, toilets, materials for finish line, etc.

Around the competition center, generally we propose a regional product market to promote the local economy and relationship. In the competition area, we have a big parking for cars and camping cars closer an open space to located competition center and finish area.



9. Weather and climate conditions

Climate in Aralar is quite changing during a day and during a few days. It has two main influences: Mediterranean-Continental and Atlantic. The first provides hot and dry sensation and possible thunderstorms, and the second brings fog, possible rain and cold. Moreover the wind, called Cierzo in Ebro valley, is present most of the days. It comes from the North, the Cantabrian Sea, and goes to Surest, Ebro valley. This wind causes fog in highest part of the range due the low clouds carried from sea. However, there are important differences between highest part of the range and lower parts. Usually, August weather presents these **averaged** values:

Artxueta 1343m (close to the top)

Max. Temperature: 16-21° (extreme values in a normal month 10-30°)

Min. Temperature: 8-12° (extreme values in a normal month 5-16°)

Days of rain (more of 1 mm): 8

Of which, precipitation is: 8mm (extreme value in a normal month 40mm)

Foggy days: 4 during all the day, and 10 partially

Etxarri-Aranatz 500m (Sakana valley, in the south)

Max. Temperature: 18-28° (extreme values in a normal month 15-35°)

Min. Temperature: 10-16° (extreme values in a normal month 8-18°)

Days of rain (more of 1 mm): 4

Of which, precipitation is: 6mm (extreme value in a normal month 40mm)

Foggy days: 0

Therefore, we can conclude that the key factor that determines the climate conditions on the above mentioned area remains the wind. South wind is equal to Mediterranean and Continental influence, whereas North wind provides the Atlantic weather conditions. Changes are typically sudden and difficult to forecast. Fortunately weather conditions are quite warm, calm and stable in the summer month, particularly in August, with prevailing Mediterranean conditions.

10. Lighting

	Saturday, 27 August	Sunday, 28 August
Civil twilight starts	06.59	07.00
Sunrise	07.28	07.29
Sunset	20.51	20.49
Civil twilight ends	21.20	21.18
Day length	13.22	13.19



11. Transport and Accommodation info

Transport: The Event centre can be reached by car (own, rental) from Bilbao or Biarritz-France international airports (low cost companies also provide services to and from the airports mentioned). Both Biarritz (92km) and Bilbao (136km) are located within a driving distance from Lekunberri (Navarre), hosting town of the event. Two other regional airports provide access to the Event Center, Pamplona and San Sebastian Airports, both closer to Lekunberri and within an hour driving distance.

Participants can arrive also to Barcelona Airport and with rental car they can drive to Pamplona. The driving distance from Barcelona is 520 Km and it takes less than 5h by motorway.



Public transport also provides multiple daily services connecting San Sebastian and Pamplona with Lekunberri and depending on route it takes 1 h from both cities.

For the convenience of competitors and accompanying friends and/or family a shuttle bus service will be available connecting Lekunberri city to the event center.

Timetables and pre-booking options will also be available on the 13th ERC2016 website and bulletins. Specific car, bus, bicycle, motorcycle and caravan parking areas will be designated at the Event centre.

Accommodation: local tourism information bureau offers a wide range of different level holiday options. (Hostels, rural apartments, farmhouses, rural stays, hotels and camping sites)

Different tourism related agencies are established around the Aralar range – competition area:

- Plazaola tourism consortium. (<http://www.plazaola.org/en/>)
- Goierri turismo. (<http://www.goierriturismo.com/en/>)

Local camping sites will be provided directly at the Event centre. Information about accommodation options will be available on the 13th ERC2016 website and bulletins.

12. Communication strategies

According to the event nature, and its significance, the organizers are in close contact with the European cultural capital 2016 San Sebastian (<http://www.donostiasansebastian2016.eu/>), with the hope that, shall Lekunberri host the event; our event will be included within the agenda of the European Cultural capital of 2016.



In the Basque Country and Navarre the mountaineering tradition is very large and Aralar range is known for his trail tradition. (Ultratrail Ehun Milak. <http://www.ehunmilak.com/en/> or the trail organized near Aralar in Aizkorri, Zegama Aizkorri, <http://www.zegama-aizkorri.com/en/index-22/>). So the organizers consider that the ERC2016 in Aralar would be an opportunity to divulge the rogaine sport and contribute in the expansion of this sport. To connect with the trail runners will be another communicating strategy.

Finally, like in previous regional rogaines, the organizers ensure the support of this event by the Navarre government, Basque government, Provincial Council of Gipuzkoa and the regional authorities and municipalities.

13. Names of the key organizers

Roberto Pascual Orcajo. Course setter and mapper.

Jorge Urquizu Barasoain. Event director.

Eric Collon. Timing and results services team leader.

Ibon Goikoetxea Retegi. Event co-director.

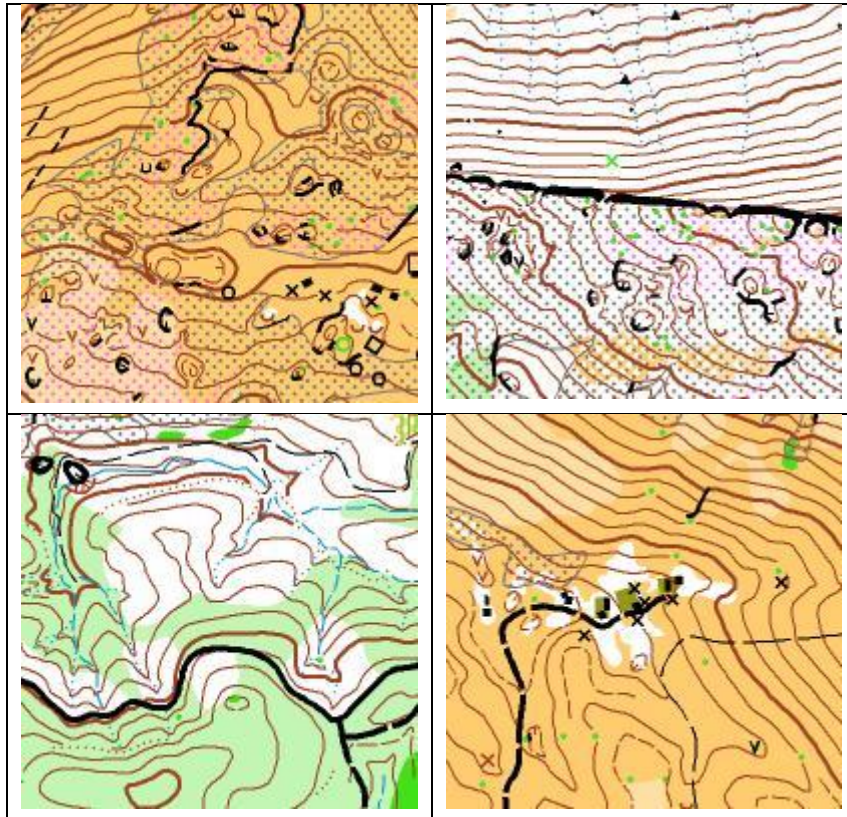
More than 50 volunteers from local towns as well as from orienteering clubs of CDN and GOT will be involved in supporting and organizing activities related to the 13th ERC 2016. Among these volunteers are some who speak with fluency English, French, German, Italian, Slovakian and, of course, Spanish and Basque.

14. Compliance with general conditions

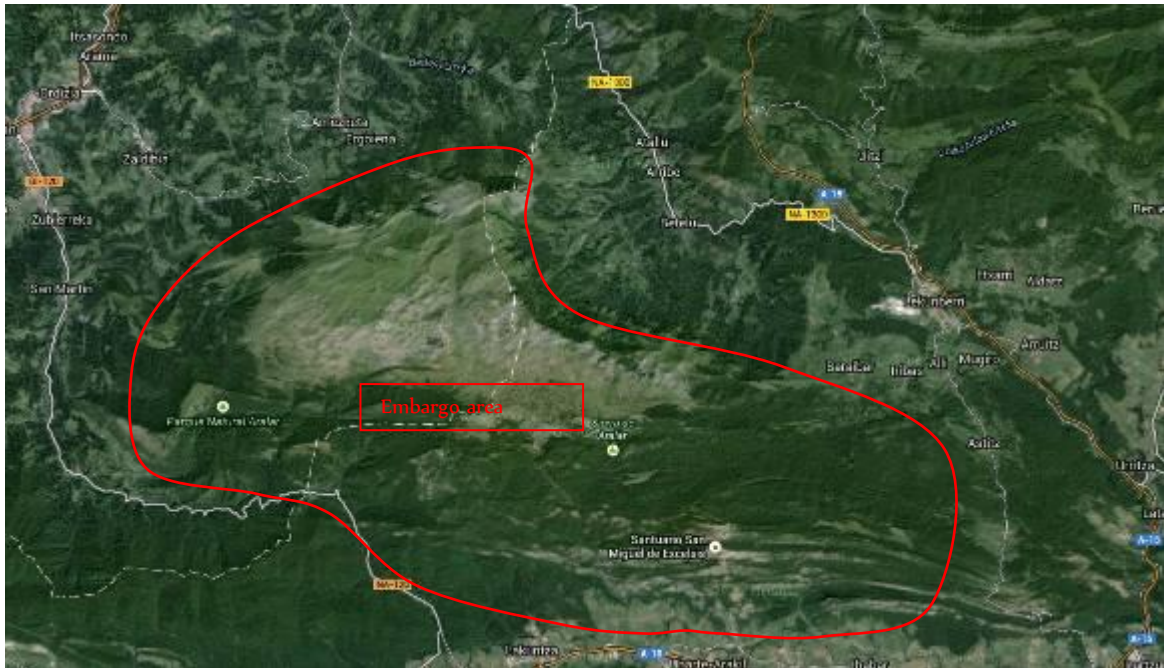
Iberogaine and CDN/GOT orienteering clubs and the organizing team assumes that the event will be organized in compliance with the IRF rules of rogaining. That Aralar 2016 rogaine will be the major Iberogaine event in 2016 and accepts the established IRF levy.

15. Additional details

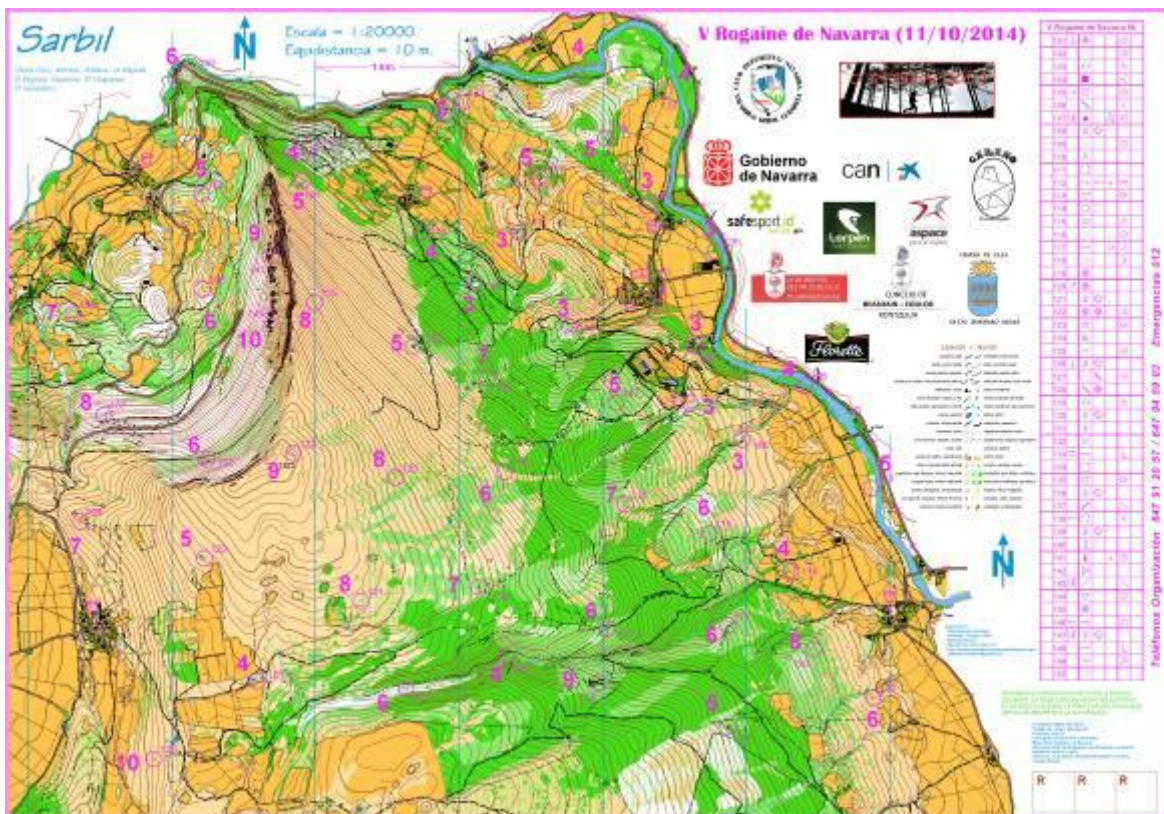
Map samples from existing Aralar map (1 square km per each)



Google maps image.



6-h rogaine map sample.





Web site sample:

6 hour rogaines organized by CDN and GOT, web samples:

<http://odeportivonavarramaraton.blogspot.com.es/>

<http://orientimosrogaine.blogspot.com.es/>

GPS- tracking. <http://178.79.150.220/got/>

Videos. <http://youtu.be/fR6ivJYcnRw>

**SEE YOU AT 13th EUROPEAN ROGAINING
CHAMPIONSHIPS IN SPAIN!!!**

**Best regards and wishes,
Roberto Pascual
IbeRogaine President**